

CERTIFICATE OF LOCATION OF GOVERNMENT CORNER

NORTHEAST Corner of Section 20, Township 107, Range 43, 5TH P.M.

STATE OF MINNESOTA, County of MURRAY

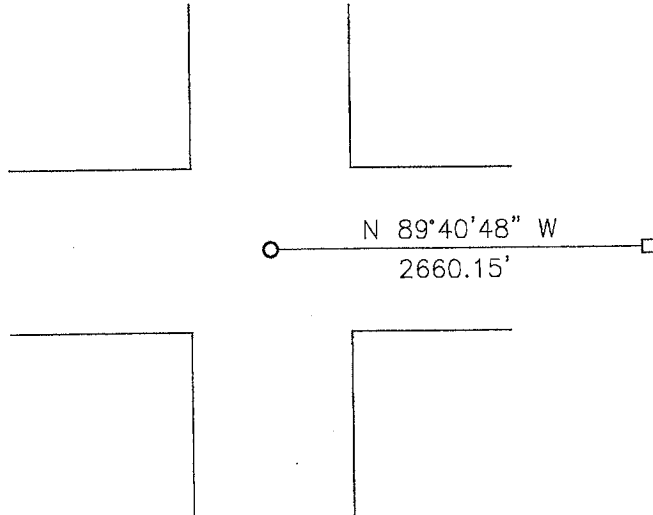
At the corner location shown on the sketch:

On 03-06-2012 found a PK nail
DATE

left monument as found, lowered monument, removed monument (explain)

On _____ placed a _____
DATE

SKETCH OF REFERENCE TIES



Minnesota State Plane Coordinate
System Redwood County Datum
NAD83 (1996)

N: 179618.195
E: 432319.211

Statement of evidence relative to this corner location is on back of page.

I hereby certify that this document and the data contained herein was prepared by me or under my direct supervision.

Samuel B. ... 2/21/13
SIGNATURE DATE

Registration No. 43844

- Land Surveyor, Professional Engineer
 County Surveyor, County Engineer

OFFICE OF THE COUNTY RECORDER

County of _____

I hereby certify that this document was filed in the Co. Recorders office at _____ .M on the _____ day of MAY 23 2013 A.D. 20 _____

County Recorder *James V. Johnson*
By _____, Deputy

DOCUMENT NO. _____

Statement of Evidence

In 1866, J. W. Bishop did the original subdivision of the township.

On August 27, 1936, the Murray County Highway Department found a concrete monument at the corner.

On July 19, 1983, the Murray County Highway Department found a concrete monument over a field stone.

On August 21, 1985, the Murray County Highway Department removed the concrete monument and set a 30" iron above the stone.

On August 21, 1987, the Murray County Highway Department set a PK nail at the surface.

On March 6, 2012, Bueltel-Moseng Land Surveying found a PK nail at the surface.